



Charge Definitions

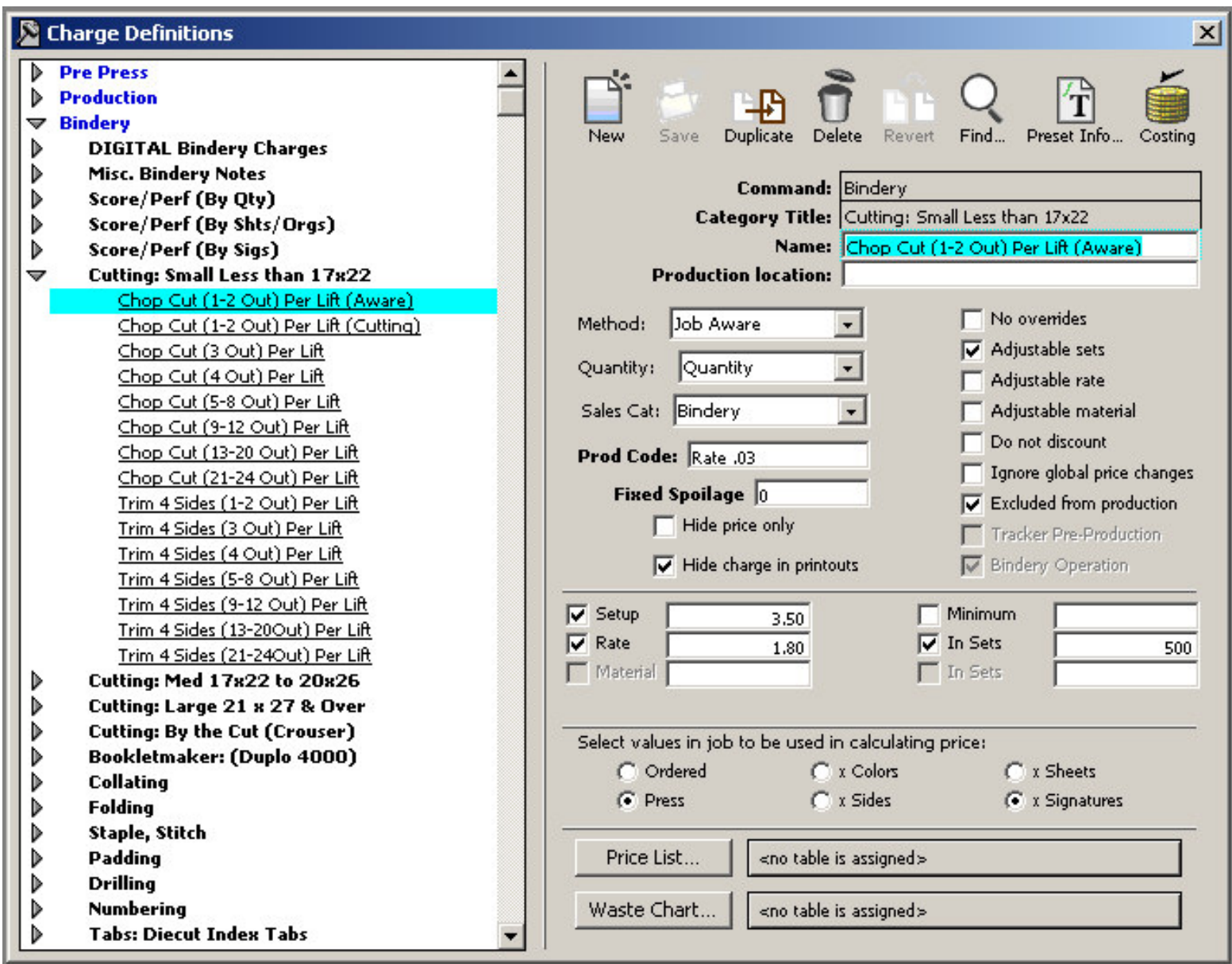
Here is how mine are setup

- ▶ **Pre Press**
- ▶ **Production**
- ▼ **Bindery**
 - ▶ **DIGITAL Bindery Charges**
 - ▶ **Misc. Bindery Notes**
 - ▶ **Score/Perf (By Qty)**
 - ▶ **Score/Perf (By Shts/Orgs)**
 - ▶ **Score/Perf (By Sigs)**
 - ▼ **Cutting: Small Less than 17x22**
 - Chop Cut (1-2 Out) Per Lift
 - Chop Cut (3 Out) Per Lift
 - Chop Cut (4 Out) Per Lift
 - Chop Cut (5-8 Out) Per Lift
 - Chop Cut (9-12 Out) Per Lift
 - Chop Cut (13-20 Out) Per Lift
 - Chop Cut (21-24 Out) Per Lift

 - Trim 4 Sides (1-2 Out) Per Lift
 - Trim 4 Sides (3 Out) Per Lift
 - Trim 4 Sides (4 Out) Per Lift
 - Trim 4 Sides (5-8 Out) Per Lift
 - Trim 4 Sides (9-12 Out) Per Lift
 - Trim 4 Sides (13-20Out) Per Lift
 - Trim 4 Sides (21-24Out) Per Lift
- ▶ **Cutting: Med 17x22 to 20x26**
- ▶ **Cutting: Large 21 x 27 & Over**
- ▶ **Cutting: By the Cut (Crouser)**
- ▶ **Bookletmaker: (Duplo 4000)**
- ▶ **Collating**
- ▶ **Folding**
- ▶ **Staple, Stitch**
- ▶ **Padding**
- ▶ **Drilling**
- ▶ **Numbering**
- ▶ **Tabs: Diecut Index Tabs**
- ▶ **Coil Binding (Spiral)**

**Chop Cuts
are Standard Cuts with
No Bleeds
No Back Trim
(Above the Red Line)**

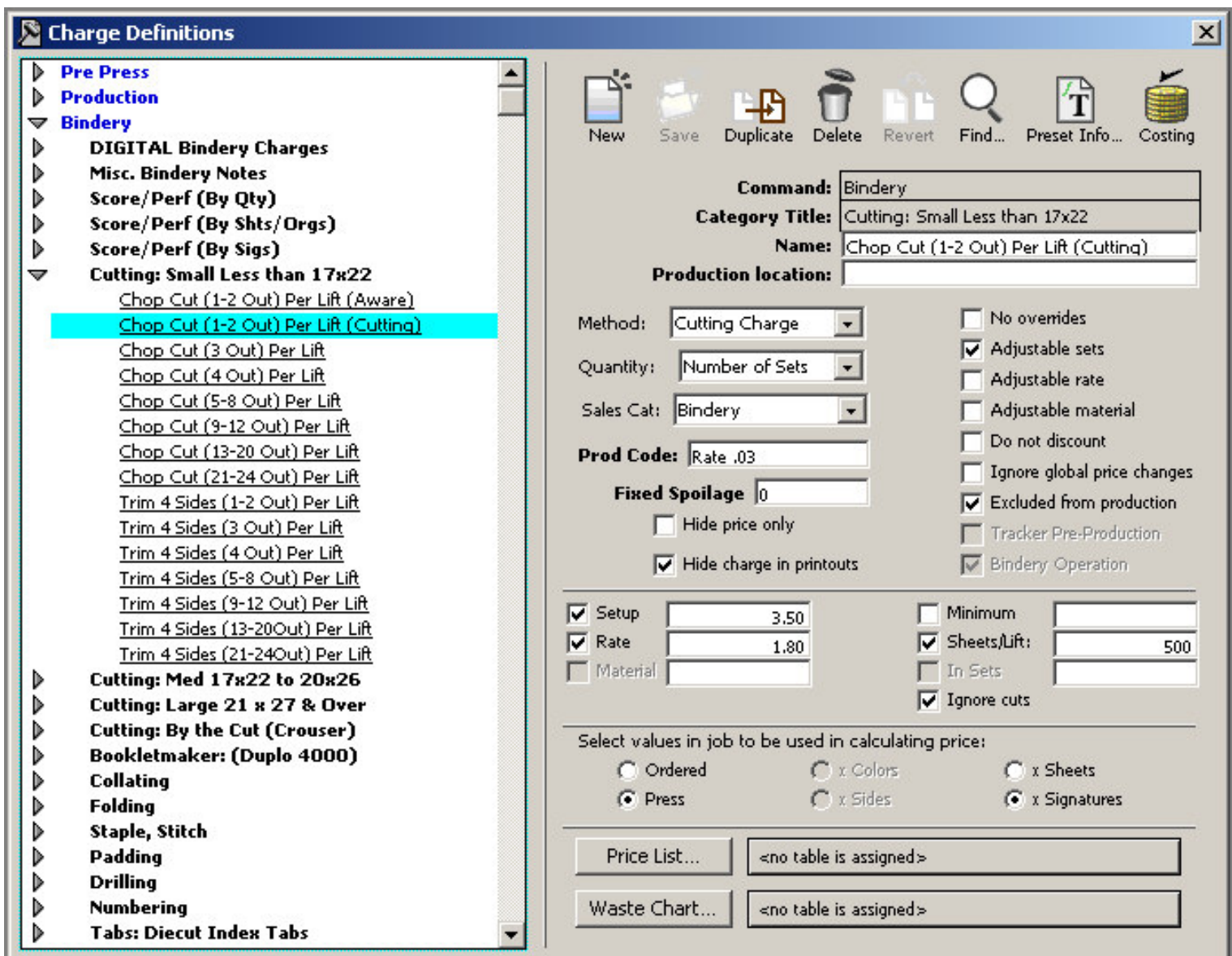
**Trim 4 Sides
means that there are
Bleeds
Or
Back Trim
(Below the Red Line)**



There are 2 Ways to setup cutting BY LIFT

1. See sample above
2. Notice that it is Job Aware
3. It uses Quantiy
4. It uses Press & Signatures

Now look at the next page and compare the difference.
The results will be the same.



There are 2 Ways to setup cutting BY LIFT

1. See sample above
2. Notice that it is a Cutting Charge
3. It uses Number of Sets
4. It has a Check Box for IGNORE CUTS
5. It uses Press & Signatures

Now look at the previous page and compare the difference.

The results will be the same.